

Affiliated to CBSE up to +2 Level

An English Medium Co-educational Senior Secondary School With separate Hostel for Boys & Girls



BIJENDRA PUBLIC SCHOOL

NH -31, Maranga, Purnea- 854303

School Code- 65154, Affiliation No- 330159

Lay the Best Foundation for Building the Future of Your Child

Big Lush Greenery

Modern Classrooms

Hostels For Boys & Girls

Well Equipped Labs





Index

Inspiration & The Founder	—— 01	Safety & Security	—— 09
From The Principal's Desk	—— 02	General Rules	—— 11
Bijendra Memorial Society	—— 03	Hostel Rules	—— 12
Managing Committee	—— 04	Medical Help	—— 14
Admission Procedure	—— 05	Anti Bullying Rules	—— 15
The School	—— 06	Withdrawal Rules	—— 16
The Curriculum	—— 07	Items for School	—— 17
Our Achievements	—— 08	Results	—— 24



Late Bijendra Narayan Choudhary



Late Soudamini Devi

Their Philosophy

Education in the early years is vitally important for the children to acquire basic skills. It is important that foundations are laid on which future learning can take place. If children are well motivated, enthusiastic interested and happy then they learn more effectively.

The school should aim to develop these skills in a creative, imaginative and original way.

The Founder

Late Krishna Murari Choudhary
S/o Late Bijendra Narayan Choudhary

A man whose vision was to empower students to acquire, demonstrate, articulate and value knowledge and skills that will support them lifelong and practice the core values of the school: respect, tolerance and inclusion and excellence.

He firmly believed that children need to learn in an atmosphere where they are not afraid to make mistakes and this in turn becomes an important part of the learning process. Each child should be encouraged to reach their highest potential and motivated to want to continue learning.



Late Krishna Murari Choudhary



The Guiding Force, the Inspiration, the Motivation behind the establishment of the school



FROM THE PRINCIPAL'S DESK

Education moulds the minds of children in their most formative years. The future of our great nation is being formed in today's classrooms. With a dedicated team of committed educators, we, at BPS, strive hard for the holistic development of the students entrusted in our care, so as to enable them to stand up boldly, with their heads held high, and be useful citizens of the society. We spot their hidden talents, hone them up, and help them etch out a niche for themselves among the teeming millions. Their social, emotional, psychological, physical and intellectual development is our sole aim.



Krishnan C.C.
Principal





BIJENDRA MEMORIAL SOCIETY - AN INTRODUCTION

Bijendra Memorial Society was registered in the year 2001 on 16th day of October at Patna with a charitable motive to impart quality and affordable education to the common man of the vicinity. Keeping this in view, the governing body of the Society established a school named ***Bijendra Public School at Purnea (Bihar)*** in the year 2001-02. Since then the school is being run by the Society and has scaled new heights year after year.

Apart from providing good education, the Society also engages itself in other activities namely medical relief to the poor. And for this purpose, the Society has established a dispensary at Mata Asthan, Purnea. A well qualified M. B. B. S. doctor visits the dispensary at periodic intervals and gives treatment, free of cost to the general public. Generic medicine is also distributed amongst the general public.

The Society also organises seminars on various topics such as advancement in education, information technology etc.

The Society is run by a Governing Body comprising persons from different walks of life.

The names of members are -

1. Smt. Bhawana Kumari

2. Sri Bhanu Bhaskar

3. Sri Shani Kumar

4. Sri Binod Choudhary

5. Sri Ravi Shankar Singh

Chairperson

Secretary

Treasurer

Member

Member



SCHOOL MANAGING COMMITTEE

- | | |
|--|----------------------------------|
| 1. Mrs. Kala Kiran Choudhary | Chairperson |
| 2. Mr. Bhanu Bhaskar | Manager & Managing Director |
| 3. Mr. Shani Kumar | Director |
| 4. Principal, J. N. V., Garhbanaili, Purnea | Member |
| 5. Principal, K. V., Airbase, Chunapur, Purnea | Member |
| 6. Principal, Bijendra Public School, Purnea | Ex-officio Member |
| 7. Mrs. Arpana Bhaskar | Member |
| 8. Mr. Abhas Kumar Mishra | Member, Teacher's Representative |
| 9. Mr. Gopal Jha | Member, Teacher's Representative |
| 10. Mrs. Archana Thakur | Member, Teacher's Representative |
| 11. Mrs. Sonia Sachdeva | Member, Teacher's Representative |
| 12. Mr. Binay Kumar Singh | Parent's Representative |
| 13. Mr. Rupesh Kumar | Parent's Representative |
| 14. Mr. Rajesh Kumar Sharma | Parent's Representative |
| 15. Mr. Anant Bharti | Parent's Representative |





MISSION STATEMENT

"To strive tirelessly for perfection and excellence today to prepare learners to succeed in a ever-changing and challenging world of the future by providing diverse education in a safe, supportive environment promoting self-discipline, motivation and excellence in learning that help the learners grow in confidence and develop their potential to its optimum."

SCHOOL'S LEARNING PHILOSOPHY

Learning experiences created for learners in school help to build knowledge, skills and attitudes. The classrooms help the learners to analyze and evaluate their experiences, learn to doubt, to question, to investigate and to think independently. The environment of the school transforms them. Students learn best when they actively participate in the lesson or that they feel valued when teachers encourage them to share their knowledge with their peers.

ADMISSION PROCESS

Admission are granted to students on their successful clearing of the admission test and parental interaction from Class- I upwards. For LKG and UKG admissions are granted on the basis of an interaction with the parents and meeting the other admission criteria.

ADMISSION PROCEDURE

Step I

Submit the Registration form duly filled in the school office and confirm the entrance test date or date for parental interaction.



Step II

Students appear for the entrance test on the stipulated date.



Step III

Declaration of results and dates for parental interaction communicated to the parents.



Step IV

Submit the admission form duly filled along with the required documents and photographs in the school office. Deposit the fees and confirm the admission of the student(s)

Please note that a cancelled cheque or the photocopy of the first page of your bank account passbook, of the bank account which you would use for transaction with the school, is to be submitted at the time of admission.

If admission is taken as Boarder and if you want to convert to Day Scholar, you have to re-admit the student as Day Scholar. Payment made as Boarder will not be refunded at any circumstances.

THE SCHOOL



Created with a vision to make quality education accessible to all strata of society at an affordable cost, Bijendra Public School, Purnea has carved out a niche for itself in Bihar and stands as a premier institution of learning today. Built in the lush green surroundings and a tranquil atmosphere of Maranga, a hamlet in Purnea district, the school epitomizes the joy of learning and makes learning a pleasant experience. The school does not focus on one element in isolation, rather a whole child approach to education is taken. The authorities here are conscious of the intersection between physical space and the cognitive, social and emotional development of students. The school provides appropriate facilities, well managed classrooms, school based health support and a clear fair disciplinary policy. Intellectual challenge and academic achievement, creative and independent thinking, mutual respect between students and teachers, deep respect for each individual and diversity are strongly valued here. The school provides education where the focus is on formation of character, increasing the strength of mind, broadening the intellect and making learners capable of standing on one's own feet.

Established in the year 2002, the school is a Co-educational English Medium School affiliated to the Central Board of Secondary Education, New Delhi and runs classes from Kindergarten to Class XII. The school also provides separate hostel facilities for both boys and girls from Class III to Class X.



THE CURRICULUM

We provide education with an objective to empower students to make decisions to find creative solutions and plan effective action strategies. The curriculum is designed in such a way that the child is in touch with the everchanging world trends right from the junior level to the senior level.

We constantly review, evaluate and reshape the classroom and teaching strategy to create the most appropriate education that the child deserves. The study programme for all learning level incorporates the needs and the abilities of the child with the most appropriate teaching methodology.

The following subjects are taught at different levels.

1

Kindergarten
the Foundation Stage

English
EVS
Hindi
Mathematics
General Knowledge
Health and Physical
Education
Visual and Performing Art

2

Primary Level

English
Hindi
Sanskrit/Urdu (Class III onwards)
Mathematics
Science
Social Studies
Health and Physical Education
Visual and Performing Art
Information and Communication-
Technologies (Class III onwards)

3

Middle Level

English
Hindi/Sanskrit/Urdu
Mathematics
Science
Social Studies
Health and Physical Education
Visual and Performing Art
Information and Communication-
Technologies

4

Secondary Level

English
Hindi/Sanskrit/Urdu
Mathematics
Science
Social Science
Information Technology
Personal, Social, Health
and Physical Education

5

Senior Secondary Level

Science Stream

English Core
Physics
Chemistry
Biology
Mathematics
Health and Physical
Education
IP & Painting

Commerce Stream

English Core
Economics
Accountancy
Business Studies
Health and Physical
Education
IP & Painting

Humanities Stream

English Core
Economics
History
Geography
Political Science
Health and Physical
Education
IP & Painting

Our Achievements

AWARDS AND HONOURS



- ★ "National Award for Educational Excellence" by Indian Economic Development and Research Association, Delhi.
- ★ "Bharat Gaurav" Award to Mr. Bhanu Bhaskar, Managing Director, by All India Achievers Foundation, New Delhi.
- ★ "Adarsh Pathshala" Award by Mahatma Gandhi Rashtrabhasa Prachar Sabha, Pune.



BESIDES QUALITY EDUCATION, SAFETY AND SECURITY OF YOUR CHILD IS OUR OVERRIDING CONCERN.

We understand that besides academic excellence of your ward, your expectations from the school is also the safety and security of your child here, which is crucial for us also. It is pertinent to ensure that and we are fortunate to inform you that we have already implemented several measures for the safety and security of your child. Some of the prominent measures, we would like you to know, are mentioned below:

1. The entire school building, laboratories, library, the playground and the main gate are under CCTV surveillance.
2. The structure of the school buildings is shaped **E** and **L** shaped. The school has an open structure and this enables proper monitoring of the school building.
3. Unauthorised entry into the school campus is strictly prohibited. The entry of each visitor is made in the visitor's book. Clearance is given to any visitor before entering the school premises. No visitor is allowed to enter the school building unescorted.
4. The school premises is fenced and gated so the numbers of people who come and go out are check-mated. Security Personnel are stationed at the school gate.
5. The school has a separate bus parking area which is adjacent to the main campus and a separate cycle stand. During school hours the students are not allowed to go to the parking area or cycle stand. There are separate toilets for bus drivers, cleaners and other staff. Drivers / cleaners are not allowed to enter school building.
6. To ensure mental health of the students; cases of bullying/beating etc. on school premises are promptly addressed.
7. The school has taken ample precaution for fire safety. The fire safety audit is conducted by the Fire Department every year. Mock drill is carried out in the school campus to make the students aware of fire safety norms. Fire extinguishers have been installed at various strategic points.
8. Teachers are alert and vigilant and students are never left unobserved.
9. These are just a few of the several measures we have adopted for the safety and security of your child. We would highly appreciate if you come forward with suggestions (if you have any) to further enhance the safety and security of your child which is a collaborative venture on the part of both parents and school administration.

गुणवत्तापूर्ण शिक्षण के साथ-साथ आपके बच्चे की कुशलता और सुरक्षा हमारे लिए अत्यन्त महत्त्वपूर्ण है।

आपके बच्चे की कुशलता और सुरक्षा हमारे लिए अत्यन्त महत्त्वपूर्ण है। हम आपकी अपेक्षाओं को समझते हैं कि आप अपने बच्चे के शैक्षणिक उत्कृष्टता के साथ-साथ उनकी कुशलता और सुरक्षा भी चाहते हैं, जो हमारे लिए भी महत्त्वपूर्ण है। हम आपको सूचित करना चाहते हैं कि आपके बच्चे की कुशलता और सुरक्षा को सुनिश्चित करने के लिए हमलोगों ने पहले से ही कई उपाय किए हैं। हमने इसके लिए सभी जरूरी कदम और साधनों की व्यवस्था की है, जो निम्नलिखित हैं :-

1. विद्यालय के सभी भवन, प्रयोगशालाएं, पुस्तकालय, खेल का मैदान, मुख्य गेट, बस पड़ाव इत्यादि सभी सीसीटीवी की लगातार निगरानी में है।
2. विद्यालय के भवन की संरचना [और] आकार का है, जो एक खुली संरचना है। इस तरह की संरचना से निर्मित भवन की निगरानी समुचित तरीके से होती है।
3. विद्यालय परिसर में अनधिकृत प्रवेश सख्त वर्जित है। प्रत्येक आगंतुक के आने-जाने की जानकारी आगंतुक पुस्तिका में दर्ज की जाती है। विद्यालय परिसर में प्रवेश करने से पहले आगंतुक को विद्यालय के स्वागत कक्ष द्वारा जाँच-पड़ताल करने के बाद ही प्रवेश करने दिया जाता है।
4. विद्यालय परिसर के चारों तरफ मजबूत चहारदीवारी और गेट का निर्माण कराया गया है। गेट पर सुरक्षा प्रहरी तैनात रहते हैं, जो हर आने-जाने वाले पर निगरानी रखते हैं।
5. विद्यालय का एक अलग बस पड़ाव है, जो मुख्य परिसर से सटा हुआ है। साथ ही, विद्यार्थियों के लिए एक अलग साइकिल स्टैंड भी है। विद्यालय अवधि के दौरान विद्यार्थियों को बस पड़ाव या साइकिल स्टैंड के क्षेत्र में जाने की अनुमति नहीं है। विद्यालय के बस चालकों, क्लीनर और अन्य कर्मचारियों के लिए अलग शौचालय है। बस चालक/क्लीनर को विद्यालय भवन में प्रवेश करने की अनुमति नहीं है।
6. विद्यार्थियों के मानसिक स्वास्थ्य को सुनिश्चित करने के लिए विद्यालय परिसर में बच्चों की शैतानी/बदमाशी/पिटाई आदि के मामलों को तुरंत सुलझाया जाता है।
7. अग्नि सुरक्षा के लिए हमलोगों ने पर्याप्त सावधानी बरती है। अग्निशमन उपकरणों एवं सुरक्षा की जाँच प्रति वर्ष अग्निशमन विभाग द्वारा कराया जाता है। अग्नि सुरक्षा मानदंडों के बारे में जागरूकता के लिए विद्यालय परिसर में मॉक ड्रिल का अभ्यास किया जाता है। सभी महत्त्वपूर्ण जगहों पर अग्निशमन यंत्र लगाये गये हैं।
8. शिक्षक हमेशा सतर्क, सचेत और सावधान रहते हैं। विद्यार्थियों को बिना निगरानी के कभी भी नहीं रखा जाता है।

हमने आपके बच्चे की कुशलता और सुरक्षा के लिए उपरोक्त कुछ जरूरी व्यवस्थाएं की है। हम आपके बच्चे की कुशलता और सुरक्षा को और अधिक प्रभावी बनाने के लिए आपके सुझावों को सहर्ष आमंत्रित करते हैं। विद्यालय प्रशासन और आपके सहयोग से ही हम इस कार्य को सही तरीके से कर पायेंगे।

GENERAL RULES

1. The school shall inform the Parents / Guardians about the ward's academics, health, behaviour, conduct and any other relevant developments at regular intervals.
2. The school has the full authority to suspend / terminate any child from school on disciplinary or academic grounds if the same is found necessary in the interest of the child and/or school.
3. Children are not allowed to keep cash/valuables/jewellery in school.
4. Use of mobile phones is strictly prohibited in the school premises. Hence if any child is found in possession of a mobile phone, the same will be confiscated and not returned.
5. Parents must not give any gifts in cash or kind to any staff member of the school.
6. The school is very particular about punctuality and hence expects every child to report to school on time. Action will be taken against any child reporting late to school.
7. The school organizes additional help in subjects that a child may be facing difficulty with on the request of parents. Please route such requests to the Principal so that necessary arrangements may be made.
8. The school expects students to maintain a high degree of general behavior.
9. All students must speak in English inside the class room and try to extend this habit outside also.
10. Students are strictly prohibited from going out of the school during school hours.
11. All students are informed to bring their lunch & water bottle. No body is allowed to go out for lunch or drinking water during classes.
12. Students should be in proper and neat uniform on all working days including School functions and examinations.
13. Students should be polite, friendly and well behaved in and outside the school. They should be respectful to their elders and teachers.
14. In absence of teachers, the class prefect assumes the responsibility of maintaining discipline. She/He is not permitted to punish the students but to report to the Discipline in Charge or Routine in Charge.
15. Students found damaging furniture and electrical fitting will be dealt with severely. The damage to the school property must be made good by the parents of that particular student. The decision of the school authorities regarding the amount to be paid will be final.
16. Students must not leave the class room without the permission of the teacher.
17. No books or materials other than text notes, class note books and writing materials shall be brought to the school.
18. The students should keep their classroom, blackboard, corridor and school campus clean and tidy. Throwing papers through windows are prohibited. Waste materials should be deposited in the dustbin.
19. Students should actively participate in co-curricular activities, school functions etc.
20. Students are not allowed to wear gold and precious ornaments except ear studs by girl students. No extra make up materials like lipsticks, nail polish are allowed
21. Discipline should be maintained during assembly, class hours, intervals, lunch breaks and leaving time.
22. Stand in queue while entering into the school bus, paying fee and collecting things from the tuck shop.
23. Students are themselves responsible for their belongings such as books, umbrella, tiffin boxes etc.
24. No student is allowed to give gift or present to other student in school campus even on birthdays.

HOSTEL RULES

1. Hostel students will follow the daily routine of the Hostel and School, unless exempted on medical grounds on the recommendation of the Hostel Warden/ Medical Officer.
2. They are not allowed to stay in the rooms during school hours/games/activity/study time.
3. They are not allowed to keep or take medicines or tonic without the knowledge of the Hostel Warden. Any medicines must be handed over to the Warden concerned.
4. Mobile phones are not permitted in the school premises. Please don't send any cash / valuable articles through your ward(s) without the knowledge of House Warden. The school will not be responsible for the loss of any property of the student.
5. Electric kettles, heaters, irons or any other such appliances should not be used in the rooms.
6. Hostel students will be allowed to go home during the long and short breaks. The parents/persons authorised by the parents will collect the child from the school hostel and make arrangement for his / her travel.
7. All boarders will return to the hostel a day before the school reopens (5 p.m.). A fine of Rs. 500/- will be imposed for late arrival. Furthermore, the school reserves the right to terminate the hostel admission of any student not reporting back in time.
8. Remedial classes will be taken for weak students and it is compulsory for those identified for this to attend these classes.
9. Any hostel student falling sick will report to the Hostel Warden immediately.
10. Any willful damage to or theft of School property or other's property will be regarded as a breach of School /Hostel rules and the student would be fined by School Authorities.
11. Expensive parties to celebrate birthdays are not allowed. The School will arrange for a cake or sweets within a reasonable amount. The House Warden will undertake the arrangements for this. However the amount to be spent for the said party will be billed to the parents. Class III to VII students are allowed to celebrate birthday.
12. The student should not carry any kind of tuck from home [Extra eatables, pickles, chutneys and digestive tablets are not permissible]. Items like Gutka, Cigarettes, alcohol or even empty packets of these found in possession of students will qualify for serious disciplinary action.
13. Students can avail of the facility of Tuck-shop, Tailor, Barber, cobbler, in the Boarding House on writing a slip with the signature of the warden. Glue or items for repair of shoes are neither permissible nor required.
14. Parents are requested to get the student's Admission Number stitched on every item of clothing.
15. Entry into the Hostel by parents is prohibited. They may meet their wards in the Visitors Room.

INFORMATION FOR HOSTEL STUDENTS ROOM RULES AND REGULATIONS

Boarders are provided with a bed, a cupboard and a study unit. Each boarder must maintain utmost cleanliness and make sure the floor under his/her bed and cupboard is clean. Waste paper and refuse must be thrown in the dustbins provided in the rooms and not littered on the floor.

CUP BOARDS—Cupboards must be arranged neatly. Surprise checks will be made by Hostel Wardens. Any extra items, other than those specified in the hostel kit will be confiscated. Shoes should be arranged neatly in the shoe rack. The number of shoes is limited to four pairs (School shoes, track shoes, Sandals and slippers). Boarders will dust their rooms and cupboard tops daily.

STUDY UNITS – Books shelves are to be used for books and stationery only and not for toiletries. Books must be neatly arranged and each boarder will be responsible for the dusting and cleaning of his/her bookshelf.

Children who wish to play cricket or badminton must bring their own racquets bat and balls.

VISITORS AND VISITING HOURS

Visitors will meet their wards in the Visitors' area or Reception.

In case of an emergency, visits can be arranged with the Superintendent permission.

Parents or visitors are not permitted to enter the hostel under any circumstances, except the visiting area specially designated for meeting their wards.



SCHOOL POLICY FOR CHILDREN WHO REQUIRE IMMEDIATE/SUDDEN MEDICAL ATTENTION

BPS wants every student to remain healthy, strong and happy. But at times, some cases of fracture, cuts, bruises, sprain, stomach pain, eye pain, fever etc. occur in the school which requires immediate medical attention. In such cases, the school will take the following measures:

- i. administer whatever first aid is possible at the moment, as per the case
- ii. take the student to the doctor in Purnea town, according to the nature of the case (eye specialist, ortho, MD etc.) and inform the parents immediately, and on their arrival hand the student over to them
- iii. ensure that the child gets proper medical care and attention in the hospital till parent's arrival

The expenses incurred for the treatment will be paid by the concerned parents. Parents must inform the concerned person in the school (like Class Teacher, Section-In Charge, Hostel Superintendent, Principal), at the time of admission or during the course of the academic year, if the child is having any medical condition which require special attention. The school will help, to the extent possible, to cope up with the loss of academics, if a student remain absent due to sickness.

TELEPHONE CALLS

Parents of students may ring up their wards as per the schedule NOTIFIED SEPARATELY.

USE OF WASHROOMS

Boarders must spend the minimum time required in bathrooms and toilets to give others a fair chance to use them. They must ensure that the bathrooms and toilets, after use, are as clean as they would like to find them. They must also make sure that they close all the taps.

DISCIPLINE IN THE MESS

1. Boarders will enter the Dining Hall in proper dress and behave in a disciplined orderly manner.
2. Each hosteller will begin the meal after prayers.
3. After meals benches must be put back neatly on conclusion of the meal.

IMPORTANT SUGGESTION TO PARENTS

Good education is the joint effort of the school and the parents. So full co operation of the parents is earnestly solicited. Children learn not from the class room alone but from other sources, home, books, friends, library, cinema, T. V. etc. Hence parents have a great responsibility to pay attention to them. Each child is unique with different interests, skills and talents, parents should desist from comparing one with another, be it at home or school.

It sometimes happens that children complains to their parents concerning school matters. Parents are requested to inform the Principal such matters and to withhold their judgment until proper investigation is made. A little care in such things often prevents unhappy consequences.

Additional academic support is provided in the school after school hours for students who are identified as slow learners in study by the Director / Principal on the basis of suggestion from teachers and parents.

If your child has habits or traits of character which needs special watching, the same may be reported to the Principal / Warden.

ANTI BULLYING/RAGGING RULES Code of Conduct



STOP BULLYING/ RAGGING

1. Bullying is banned. No one is permitted to subject any other student to any kind of ill-treatment either physical or mental. Should any child persist with any anti-social act, he/she will be liable to serious disciplinary action including expulsion, as considered fit by the Principal/Hostel Superintendent.
2. Ragging of any kind is severely punishable and may lead to expulsion from the school.
3. Any child involved in any immoral act such as physical or mental harassment of student using foul language i. e. vulgar, offensive, abusive and coarse slang is liable to be expelled without warning, and there will be no reconsideration whatsoever. There will be no refund of fees in such cases. Furthermore, the Principal or the Disciplinary Committee may not assign any reason for doing so.
4. Sexual harassment or inappropriate sexually motivated words or actions, physical abuse and beating a student brutally are regarded as very serious offences. Violation of this rule will invite consequences as deemed fit by the Principal or Disciplinary Committee including judicial proceedings and the lodging of an FIR by the school authorities against the concerned student.

WITHDRAWAL RULES FROM SCHOOL

The school aims at excellence in all spheres connected with educating and holistic development of students into a well-balanced personality. We are confident that except for purely personal or family reasons a student will not be withdrawn till he / she has completed schooling (i.e. X Board). But in case it becomes imperative to withdraw a student, it may be done subject to the following rules and regulations:

If a student wants to leave the hostel or school permanently, his/her parent/ guardian has to inform the school management in writing 90 days before the date of withdrawal of the student from the hostel, failing which, the parent/guardian will have to pay the hostel charges / school fees for the next quarter (i.e. 3 months).

Three months advance notice in writing is mandatory, if a parent wishes not to send his/her ward to the school for the next session. Ordinarily such notice should reach the school not later than 31st December of the year preceding that in which the ward is sought to be withdrawn.

Failing receipt of such notice, it will be deemed that the parents have given consent for the enrolment of their ward for the next year and accommodation will be reserved for him/her accordingly.

No withdrawals are ordinarily permitted during mid-session except in special circumstances. No refund will be allowed except Caution Money and money in Personal Account as per fee regulation.

Transfer Certificate will only be issued to those students who have studied in this school for at least one full academic year. For refund of fee, the parent/guardian has to submit a cancelled cheque of the bank account in which they wish the refund fee to be transferred to. The amount of the refund, whatsoever it may be, will be credited in their account within a month.

Please note that we try to provide the best facilities available to our students. However, in case there is a machinery break down, which is beyond our control, we try to make the best alternative arrangement. Hence, no complaint will be entertained regarding this.

VERY IMPORTANT

For vacations or short breaks hostel students are allowed to go home only with parents or persons authorised by the parents whose details and photographs are given in the school record. This is strictly implemented and no request is entertained in this regard.



विद्यार्थियों द्वारा छात्रावास में व्यवहार करने हेतु लाने वाले सामान:

1. कंधी
2. बाथरूम स्लीपर, सैन्डल, जूते
3. चादर ओढ़ने के लिए
4. कम्बल या रजाई बेडिंग के साथ
5. रजाई (खोल के साथ मैरून रंग का)
6. एयरबैग
7. ताला चाभी रिंग के साथ
8. नेलकटर
9. 3 (तीन) जोड़ा कपड़ा हर रविवार को पहनने के लिए (9वीं एवं 10वीं की छात्राओं के लिए सलवार कमीज)
10. स्टील थर्मस
11. सूई और धागा
12. टूथ ब्रश, जिभिया
13. टूथ पेस्ट
14. बालों का तेल एवं शैम्पू
15. नहाने का साबुन एवं साबुनदानी
16. तौलिया 2 पीस
17. रुमाल 4 पीस
18. स्कूल बैग 1 पीस
19. पेन्सिल बॉक्स और ड्रॉइंग किट
20. अंडर गारमेंट 4 सेट

स्कूल के अन्दर के टुक शॉप से विद्यार्थियों को उनके निजी खाते से लिए जाने वाले सामान:

1. किताबें
2. कॉपियाँ
3. स्कूल यूनिफॉर्म
4. रात्रि पोशाक
5. खेल की पोशाक
6. कलम एवं पेन्सिल
7. हॉस्टल यूनिफॉर्म
8. मच्छरदानी
9. निजी सामान जैसे साबुन, शैम्पू इत्यादि ।

विद्यालय द्वारा छात्रावासीय विद्यार्थियों को रियायती दर पर दिए जाने वाले सामान

1. बिछावन
2. तकिया
3. चादर
4. तकिया खोल

ठण्ड के मौसम में विद्यार्थियों द्वारा लाये जाने वाले सामानों की सूची

1. कम्बल/रजाई - 1 (मैरून रंग के कभर के साथ)
2. शॉल - 1
3. मफलर/टोपी (ऊनी) - 1
4. जैकेट-1
5. ऊनी मोजा -3 जोड़ी
6. ट्राउजर, वेस्ट (बनियान), थर्मोकोट 3 जोड़ी (ग्रे या काला रंग)
7. घरेलू स्वेटर -1
8. लिप गार्ड -1
9. कोल्ड क्रीम -1
10. बॉडी लोशन या तेल-1
11. च्यवनप्राश-1

उपरोक्त ठण्ड के सामान को दीपावली और छठ की छुट्टी के बाद लाना है।

सभी विद्यार्थियों को हॉस्टल में आने और हॉस्टल से जाने के दिन स्कूल यूनिफॉर्म पहनना अनिवार्य है। छात्रावास का अनुशासन तोड़ने पर विद्यालय से निष्काशित किया जा सकता है।

छात्रावास के बच्चों के लिए विशेष बातें

1. जो कपड़ा घर से दिया जाता है उस पर बच्चों के नाम, वर्ग और एडमिशन नम्बर लिख कर दें। कपड़ा पहचान नहीं करने पर विद्यालय की कोई जिम्मेदारी नहीं है।
2. रक्षा बन्धन, शबे बरात जैसे त्योहारों की छुट्टी में घर ले जाने की अपेक्षा न करें। उस दिन आप अपने बच्चों से मिल सकते हैं।
3. छात्रावास में रहने वाले छात्रों को रिश्तेदारों के घर में शादी, घर की पूजा एवं इसी तरह के कुछ अन्य उत्सवों में छुट्टी देना संभव नहीं है। इसलिए कृपया छुट्टी न मांगें।
4. आपका बच्चा अगर पढ़ाई में कुछ कमजोर है या उसे कोई दिक्कत है तो कृपया विशेष विचार-विमर्श के लिए पूर्व अनुमति लेकर विद्यालय प्रबंधन से आकर मिलें। आप अपना सुझाव पत्र द्वारा भी दे सकते हैं।
5. आप बच्चों को सेव एवं बॉर्नविटा के अलावा और कुछ भी न दें। बिस्कुट, काजू किसमिश, चॉकलेट आदि छात्रावास में रखने की अनुमति नहीं है। कृपया इस प्रकार के सामान न दें।
6. कृपया मिलने के दिन या बात करने के दिन निर्धारित दिन में ही मिलें या बात करें। अन्यथा अनुमति नहीं मिलेगी।
7. छात्रावास के बच्चों से फोन पर बात करने के निर्धारित दिन के लिए आप दिए गए मोबाइल नम्बरों पर सम्पर्क कर बच्चों से बात कर सकते हैं। छात्रावास 9264452664, 9264452667, 9264452668 इसके अलावा छात्रावास के बच्चों से बात करने के निर्धारित दिन के लिए आप 9264452661, 9264452662, 9264452663 और 9264452670 पर भी सम्पर्क कर सकते हैं।

छात्रावास में दिए जाने वाले भोजन का विवरण

Day	Breakfast	Tiffin	Lunch	Snacks	Dinner
Sun	नूडल्स/छोला भटूरा	बिस्कुट, दूध, बॉर्नविटा/ ग्लूकोन डी	फ्रायड राइस, दाल, मिक्स्ड सब्जी, पापड़, सलाद	आइस्क्रीम, बर्गर	रोटी, सब्जी, दूध
Mon	ब्रेड जैम/फल अंडा/दूध/ बॉर्नविटा	बिस्कुट, फल	चावल, दाल, सब्जी, बेंगनी	बिस्कुट, केक	रोटी, पनीर चिली, दाल, खीर
Tue	पूड़ी सब्जी	बिस्कुट, दूध, बॉर्नविटा/ ग्लूकोन डी	चावल, दाल, भुजिया, रायता	कचौड़ी, केक	रोटी, दाल, मिठाई, दूध
Wed	छोला भटूरा	बिस्कुट, दूध/बॉर्नविटा	चावल, दाल, सब्जी, सलाद	समोसा, जलेबी	रोटी, अंडा करी/मटर पनीर, खीर
Thur	पोहा, दूध/बॉर्नविटा	बिस्कुट, दूध/बॉर्नविटा	चावल, कढ़ी (बुन्दी), भुजिया, पापड़	कटलेट, पेस्ट्री	रोटी, दाल तड़का, भुजिया, दूध
Fri	ब्रेड जैम/फल अंडा/ दूध	बिस्कुट, फल	चावल, दाल, सब्जी, भुजिया, अचार	समोसा, जलेबी	रोटी, सब्जी दूध, मिठाई
Satur	बिकानेरी पूड़ी, साँस	बिस्कुट, दूध/बॉर्नविटा	चावल, दाल, सब्जी, चिप्स, अचार	बिस्कुट, कुरकुरे	रोटी, चिकेन/मटर पनीर, खीर



Separate Hostel for Boys



Separate Hostel for Girls



Hostel Dormitory



Cycle Stand



Hostel Mess



Physics Lab



Chemistry Lab



Biology Lab



Mathematics Lab



Reception cum Office



Ambulance



Separate gate for entry and exit of buses



Water purifying plant to provide pure drinking water



Separate safe drinking water for boys and girls



Roti (Chapati) Making Machine for timely meals



Generator for uninterrupted power supply









Our Results Show a Tradition of Excellence

Bihar's 2nd Rank
Purnea's 1st Rank
2017
Class XII



Archi Kumari
96.6%

India's 4th Rank
Bihar's 1st Rank
2020
Class X



Bobby Prashant
99.2%



Swarnil Priyam

NEET 2021
AIR 293



Shailja Bharti

NEET 2021
AIR 2498



Muskan Mishra

BIJENDRA PUBLIC SCHOOL'S Student
Muskan Mishra in KBC



Managing Director of Bijendra Public School Mr. Bhanu Bhaskar felicitates Bobby Prashant with a laptop for her stupendous performance.



Bhavya Mishra

NEET 2022
Gen. Category 4672



Satwik Avi

India, Asia, and the International Book of Records for fast calculations

AISSE 2022



Bobby Prashant
(Science)
94.2%



Ruchika Rani
(Commerce)
91.8%



Zoya Aishan
(Science)
90%



Aditya Kumar
(Arts)
88.8%



Amit Kumar Lath
(Commerce)
90.8%



Ayush Kumar Singh
(Arts)
88.8%

AISSE 2022



MUDIT BHANSALI
97.6%



MANISH ANAND
22226818 (97.4%)



ANURAG KUMAR
22226472 (97.9%)



CHAND YASIN
22226483 (97%)



TANMAY MODI
22226553 (97%)



ABHISHEK ROY
22226553 (96.8%)



AJITESH KARAN
22226561 (96.2%)



KRISHIKA HARSH
22226559 (95.8%)



ALPHA KUMAR BHAGAT
22226586 (95.6%)



IYA BIRAJI
22226532 (95.4%)



SAHIL
22226550 (95.4%)



JIYA KUMARI
22226594 (95.2%)



RASID RAJA
22226480 (95%)



ANJALI ARYA
22226543 (95%)

AISSE 2022 Results

Total Appeared - 225

95% & Above - 14 Students

90% & Above - 54 Students

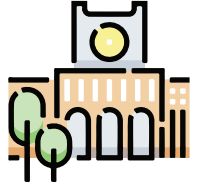
80% & Above - 123 Students

Distinction - 144 Students

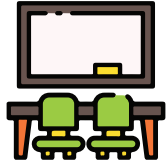
First Division - 196 Students

Average Aggregate - 78.6%

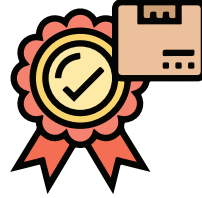
Come Let your child grow with BPS, Purnea



**Big Lush
Greenery**



**Modern
Classrooms**



**Academic
Excellence**



**Well
Equipped Labs**



**Updated
Computer Labs**



Music Rooms



Dance Rooms



**Hostels For
Boys & Girls**



**Best
Transportation**



**Big
Playgrounds**

गुणवत्तापूर्ण शिक्षा के क्षेत्र में एक स्पष्ट दृष्टिकोण अपनाते हुए समाज के सभी वर्गों को ध्यान में रखकर उचित एवं वहन करने योग्य शुल्क के साथ बिजेंद्र पब्लिक स्कूल आज बिहार के एक प्रमुख शैक्षणिक संस्थान के रूप में अपने आप को स्थापित कर चुका है। पूर्णतः हरे भरे वातावरण में उच्च कोटि के शैक्षणिक मापदंडों एवं उपयुक्त माहौल के साथ मरंगा, NH 31 में स्थित, यह विद्यालय पूर्णिया जिला वासियों के लिए शिक्षा जगत में आशा एवं आनंद का केंद्र बन गया है। यहां पर किंडर गार्टन से 12वीं कक्षा तक की सभी संकायों की कक्षाएं संचालित होती हैं।

बहु मंजिली एवं भव्य इमारतें, आधुनिक उपकरणों से सुसज्जित प्रयोगशाला, आधुनिक कंप्यूटर कक्ष, सभी प्रकार के खेलों के लिए वृहद खेल का मैदान ,भव्य साइकिल स्टैंड, ऊंची दीवारों से घिरा बस स्टैंड जिसमें 16 बसें हैं, समर्पित योग्य शिक्षकों का समूह, नवीनतम तकनीक एवं प्रणाली पर आधारित शिक्षण पद्धति, ललित कला एवं संगीत – नृत्य की शिक्षा, प्रत्येक शनिवार को क्विज एवं कल्चरल एक्टिविटीज विद्यालय को एक उत्कृष्ट स्थान प्रदान करती हैं।



BIJENDRA PUBLIC SCHOOL

NH -31, Maranga,
Purnea- 854303



contact@bpspurnea.com

www.bpspurnea.com

www.bpspurnea.org

Call us for more info

926 445 2661 / 62 / 63

Reception- +91 9264 452 661, 9264 452 662

WhatsApp- +91 9264 452 666

Accounts- +91 9264 452 663, 9264 452 670

